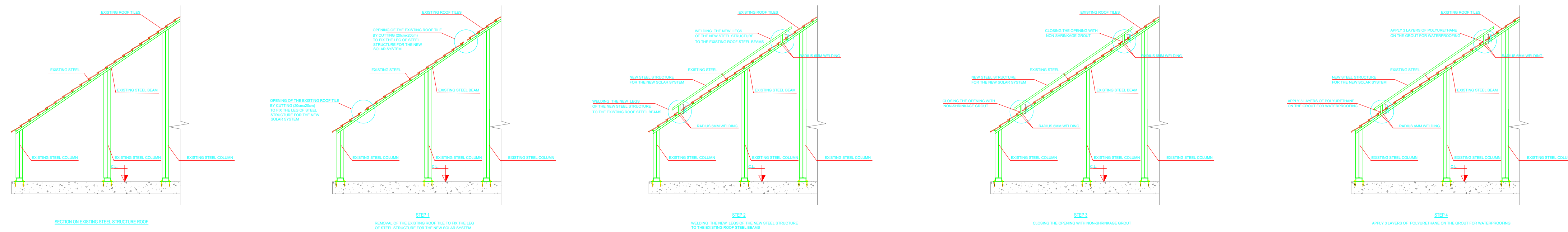
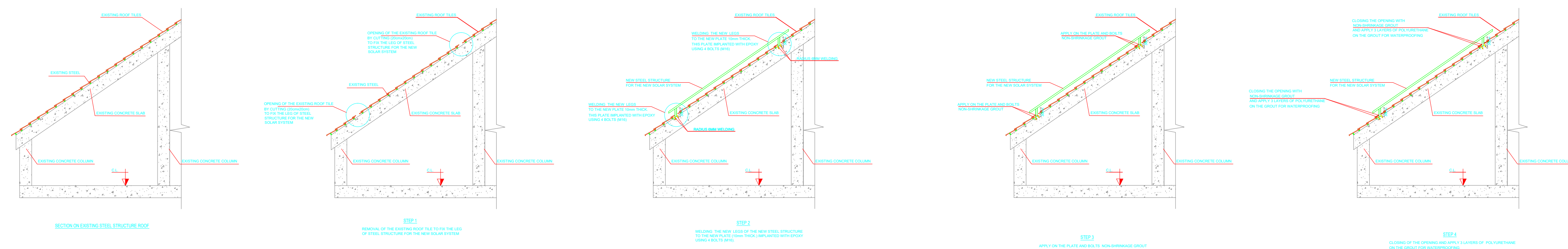


SOLAR SYSTEM ON EXISTING STEEL STRUCTURE

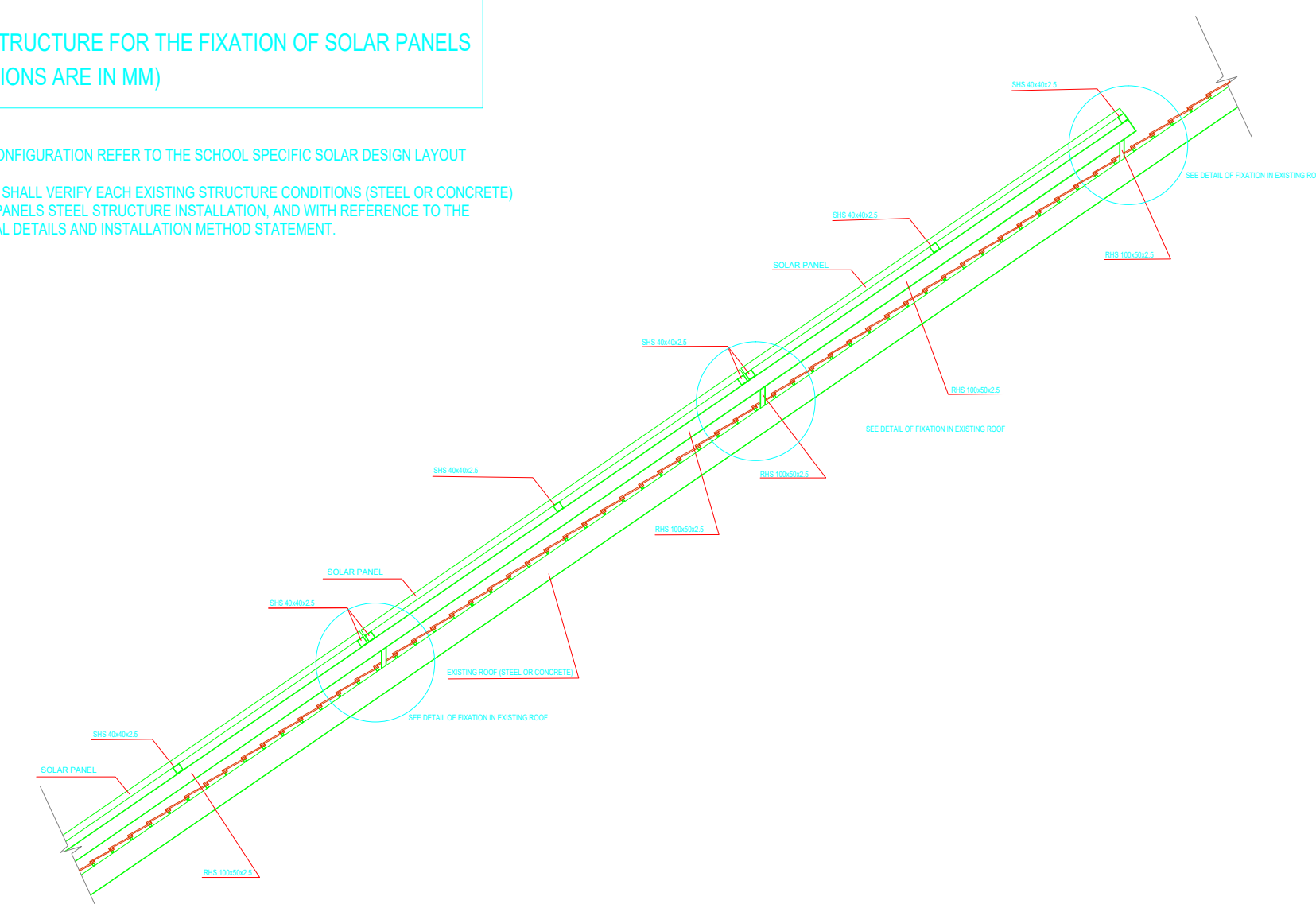


SOLAR SYSTEM ON EXISTING CONCRETE SLAB



STEEL STRUCTURE FOR THE FIXATION OF SOLAR PANELS (DIMENSIONS ARE IN MM)

CONTRACTOR SHALL VERIFY EACH EXISTING STRUCTURE CONDITIONS (STEEL OR CONCRETE) PRIOR TO PV PANELS STEEL STRUCTURE INSTALLATION, AND WITH REFERENCE TO THE ABOVE TYPICAL DETAILS AND INSTALLATION METHOD STATEMENT.



NOTES:

LEGEND:

REVISIONS:

REVISION NO.	DESCRIPTION	DATE
0	ISSUED FOR EXECUTION	05-05-23

CONSULTANT:



LCEC Engineering Office, 2nd floor Floor,
 Level 5 Bldg, President Elias Hraoui Avenue,
 Beirut, Lebanon
 Email: energy@lcec.org.lb
 Website: www.lcec.org.lb

CLIENT:

GIZ

PROJECT DESCRIPTION:

BRICK ROOF PV SYSTEM

DRAWING TITLE:

TYPICAL STEEL STRUCTURE DESIGN

PROJECT PHASE:	DRAWING SCALE:	DRAWING DISCIPLINE:
EXECUTION	NTS	STRUCTURAL